

Instructions

The following items are provided to help you make your own personalized wish card.

- A card to cut out and assemble
- An envelope to cut out and assemble
- A sheet of stamps to cut out and stick

Fold the wish card in two along the solid horizontal line in the centre of the sheet. Fold it again in two, this time along the solid vertical line. You now have a lovely card that you can personalize.



Cut the outer contour of the envelope along the dotted line. Fold back the flaps on the left and right of the envelope along the solid line. Fold back the flap on the bottom of the envelope and then, using a glue stick or adhesive tape, fasten the bottom flap over the two side flaps. Fold the upper flap, with Karibou's image on it, towards the back of the envelope. You now have a nice envelope for your wish card.



Cut along the dotted lines on the stamps sheet to select the ones you want to apply to your card. Using a glue stick or adhesive tape, stick the stamps anywhere you want inside or outside the card. Ask Mommy or Daddy to help you write a message on the card and the envelope, such as "I love you very much!" or "Happy Halloween!" or "Happy Birthday Mommy!"

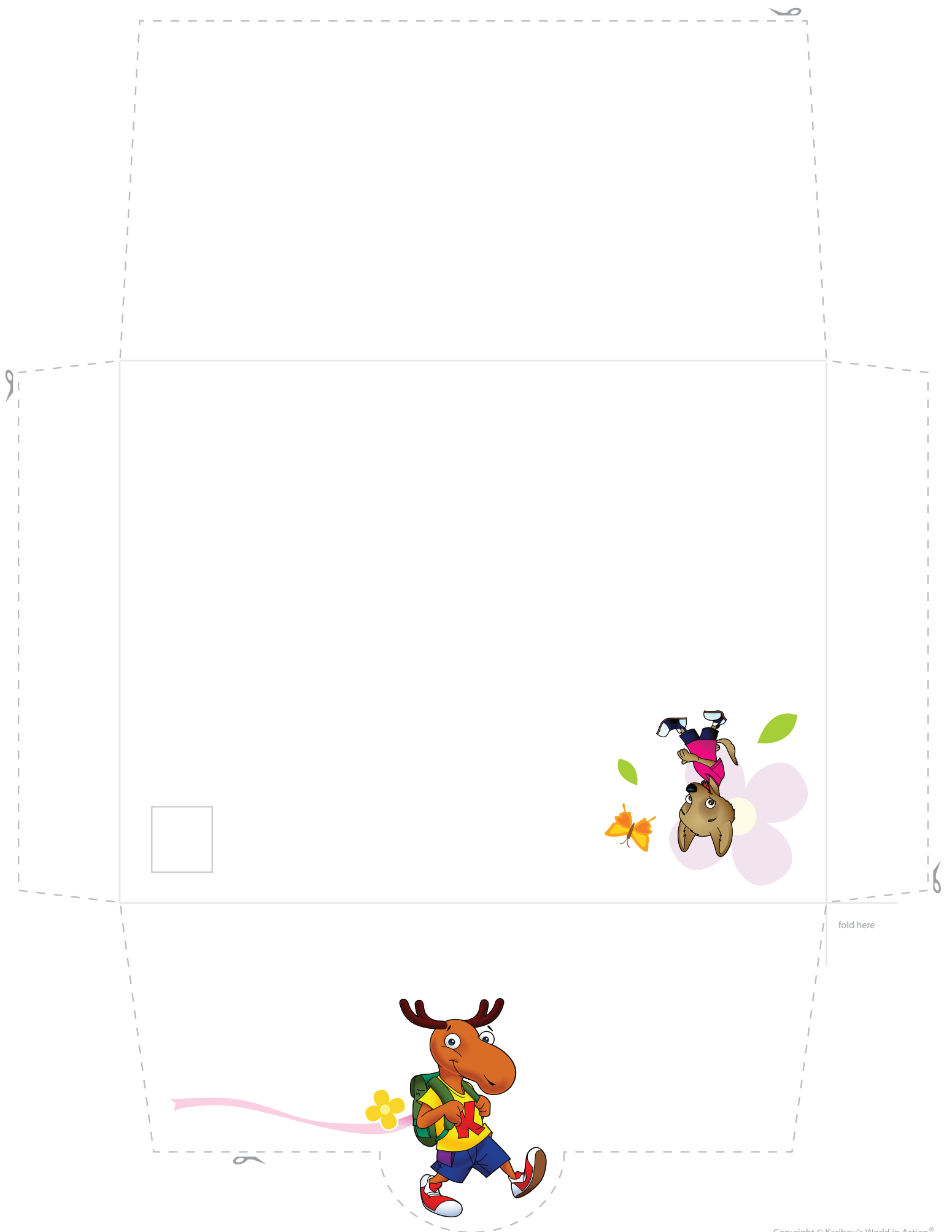


Slide the card into the envelope. Fold back the upper flap, apply glue from the glue stick or a piece of adhesive tape behind Karibou, and seal the envelope. Your Wonder Wolf card is now ready to send!



Copyright © Karibou's World in Action®.
All rights reserved. Sports Montréal inc.

www.karibousworldinaction.com



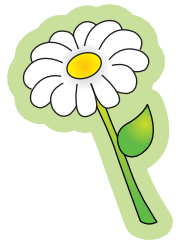
fold here

Labels

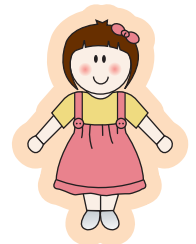
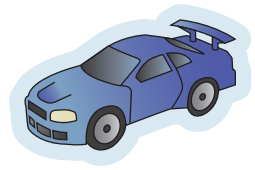
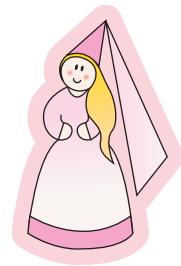
To _____

From _____

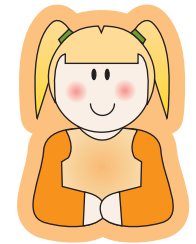
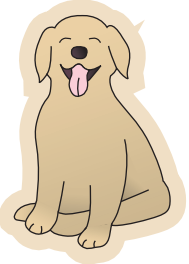
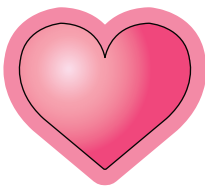
Accessories



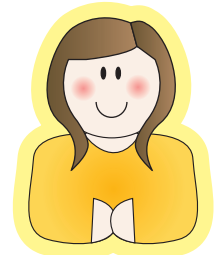
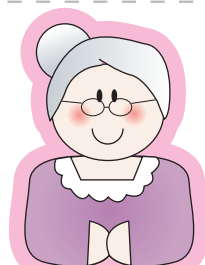
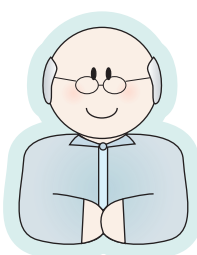
Accessories



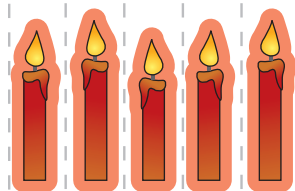
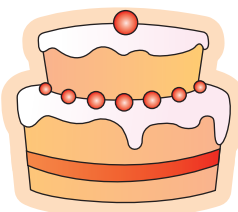
Family



Family



Birthday Party



Spring Season

